

MY PLACE, MY COMMUNITY

Shell Cove & Dunmore

POPULATION^{1,2}
6,463

9.0%

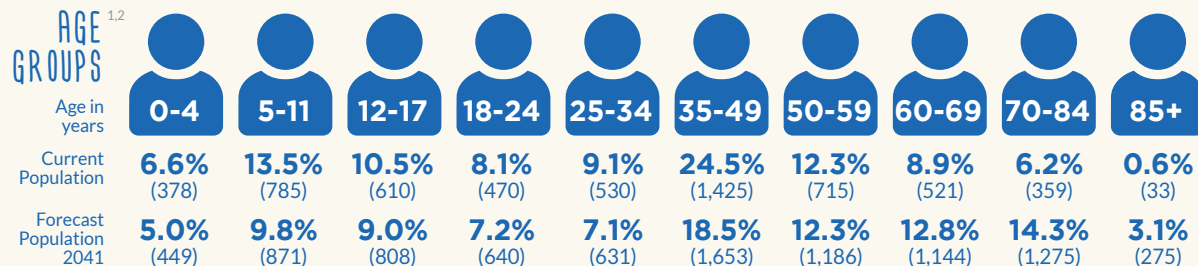
of the Shellharbour LGA

FORECAST POPULATION 2041

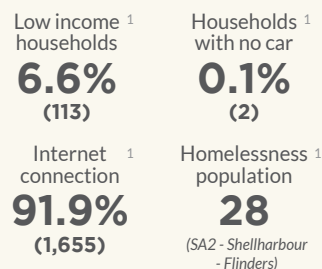
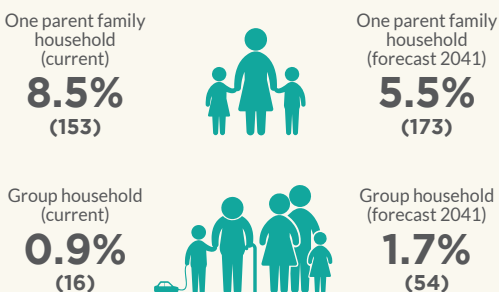
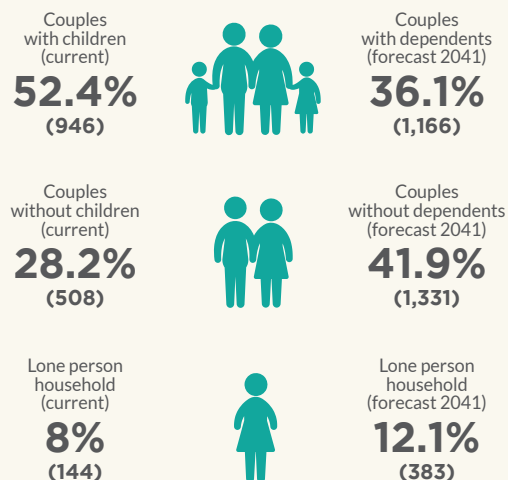
8,932

9.4%

of the Shellharbour LGA



HOUSEHOLDS



SEIFA - Level of disadvantage¹ **1083.3**

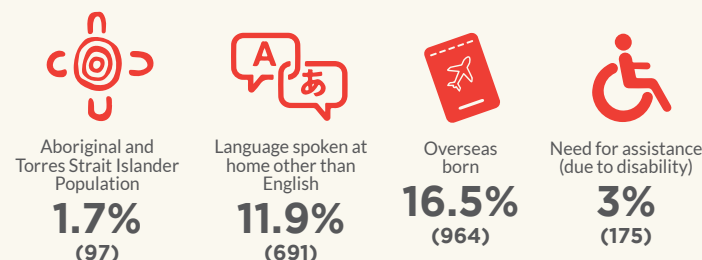
CRIME



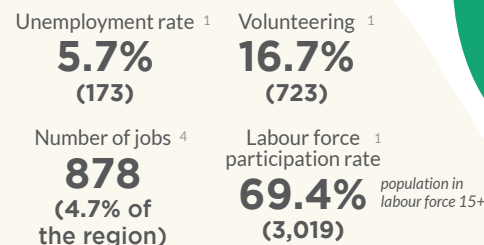
● Below NSW rate
● Above NSW rate
↓ 5 year trend decreasing
↑ 5 year trend increasing
- 5 year trend stable
* Trend information is not calculated if at least one 12-month period in the selected timeframe had less than 20 incidents

Index of Socio-educational advantage⁷ **1,065**
(average is 1000)

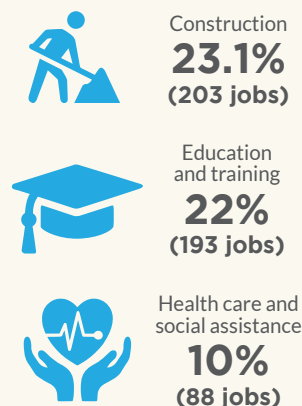
DIVERSITY & INCLUSION



EMPLOYMENT



TOP 3 EMPLOYMENT INDUSTRIES



Economic output⁴ **\$374.6M**
7.4%

of total economic output for the region

FEELING SAFE

Estimated number of people aged 18 years and over who feel safe walking alone in local area after dark

6,174 (53.2 Age Standardised Rate per 100)** (SA2 - Shellharbour - Flinders)

** An age standardised rate is a summary measure of the rate that a population would have if it had a standard age structure.

AUSTRALIAN EARLY DEVELOPMENT CENSUS

(explores development across a number of domains, including: physical, social, emotional, language and communication)

Vulnerable on two or more domains **5.3%**

HEALTH

One of the most disadvantaged areas in NSW in terms of:

- Total admissions to public hospitals

(SA2 - Shellharbour - Flinders)



¹ Australian Bureau of Statistics, Census of Population and Housing, 2011 and 2016
² Population and household forecasts, 2016 to 2041, prepared by .id

³ PHIDU Social Health Atlas
⁴ REMPLAN, 2020

⁵ NSW Bureau of Crime Statistics and Research
⁶ Australian Early Development Census, 2018

⁷ Australian Curriculum, Assessment and Reporting Authority, 2018. My School.

MY PLACE, MY COMMUNITY

Shell Cove
& Dunmore

